

# Open Secret



This bathroom in a San Francisco pied-à-terre forms a cohesive whole with the master bedroom—just the effect its owners and designers had planned. “It’s intended to be a room that you can leave open all the time,” says architect Luke Ogrydziak of Ogrydziak/Prillinger Architects. “The client had spent a lot of time in Asia, where it’s more common to have open bathrooms.” Its limestone floors extend a few feet into the bedroom, obscuring the distinction between the two spaces. And specially designed folding doors nestle discreetly into the walls when fully open, leaving unbroken sight lines between the bedroom and bath. ■ More limestone tiles, cut to varying sizes for an organic effect, cover the walls, ceilings, and vanity. “We wanted it to feel very solid, like everything was carved out of a single piece,”

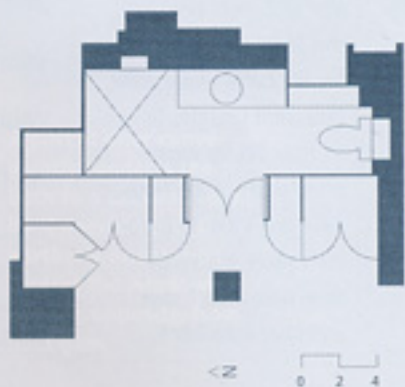
## \* Details


The painted MDF vanity drawers and folding doors in this bathroom open to reveal a hidden luxury: cherry interiors.

“Historically, there was a time when people put luxurious details on the inside of their clothing,” says architect Luke Ogrydziak. To recall that era of private indulgence, he placed the high-end finish where only the owners can see it.

says Ogrydziak. The vanity’s cabinetry and mirror lie flush with the surface of the stone to reinforce the monolithic impression. And the open shower’s trough-style drain and inset soap-and-shampoo nook enhance the sensation of continuity. Even the lighting is carefully planned so it doesn’t interrupt the smooth expanses of stone: The art-gallery fixtures above the vanity sit back into a cutout slot. ■

Project Credits: Builder: Webb Construction, San Francisco; Architect/Interior designer: Ogrydziak/Prillinger Architects, San Francisco; Project size: 185 square feet; Construction cost: Withheld; Photographer: Ikonphoto. ■ For product information see page 142.





The open shower  
segues seamlessly into  
the rest of the bath,  
due to the unbroken  
rhythm of randomly  
sized limestone tiles.